

SANFORD STATE 5N66W29 1-20

Key Stats

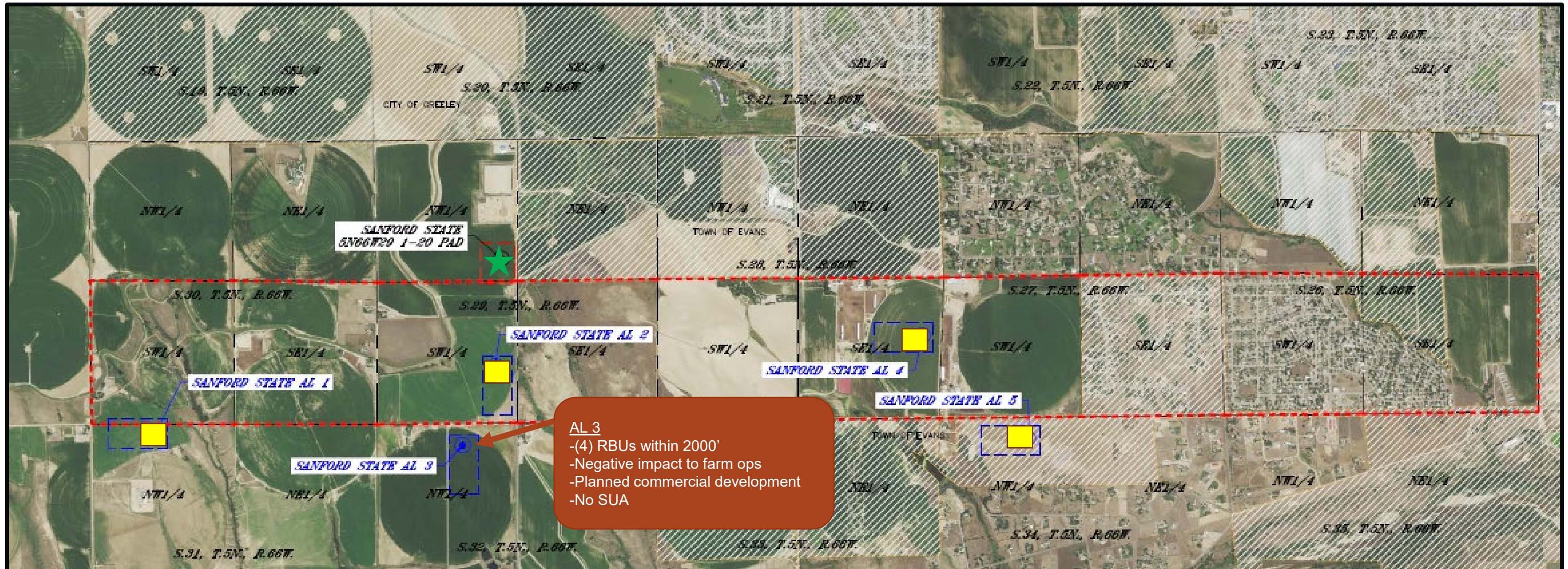
Local Government	Weld County		
Proximate Local Government	Town of Milliken & City of Greeley		
School, Childcare Center, HOBUS, DOAA	+2,000'		
Disproportionately Impacted Community	+2,000'		
Floodplain or Wetlands within Location Boundary	N/A		
High Priority Habitat	N/A		
Residential Building Units within 2000'	2		
	0-500'	500'-1,000'	1,000'-1,500'
	0	0	2

- Production Facilities will be located on PDC's existing Sanford pad which will be retrofitted to a tankless hydrocarbon facility design
- As a result of the pre-application meeting, the W-E laterals were extended to 3.25 miles to support elimination of an entire surface location (Flatiron)
- 20 Total Wells to be drilled from this location
 - 12 – 1.75 mile laterals with E-W orientation
 - 8 – 3.25 mile laterals with W-E orientation







ALTERNATIVE SITE ANALYSIS – SANFORD STATE 5N66W29 1-20

Out of 6 potential locations identified for the Sanford State acreage, 2 were explored further, including the proposed location.



Conclusion of Sanford State ALA: This location would allow PDC to drill 3.5 mile and 1.5 mile laterals (to the east and west, respectively, being 5.0 miles in total) for maximum mineral development from one surface location. The associated production equipment required for the well pad will be situated and incorporated with an existing PDC production facility approximately 450 feet north of the well pad disturbed area. The proposed pad has an SUA, existing access permit, existing RMA w Evans, and it is outside of DIC, HPH, wetlands, floodplain, no surface occupancy, school facilities, and childcare facilities.

ALA Map Legend

-  Proposed Location
-  Operationally unfeasible
-  Unable to negotiate an SUA
-  Proximity to Building Units